

Denmark Historical Society

P.O. Box 803
Denmark, Maine 04022

www.denmarkhistoricalsociety.org
denmarkhistoricalsociety@gmail.com



Volume 17—Number 3

September 2013

Message From the President:

Hi,

I just want to thank the people who attended the Denmark Historical Society's open house. It appeared that everyone was having a great time reminiscing about their time spent in Denmark. I especially want to thank Edmund Pingree for answering so many questions and Dotty Brooks for identifying events and people on several CD's that we showed. Hopefully we can outdo ourselves next year.

Also, we are looking into some individual presentations for this winter. We will keep you informed as more information becomes available. Also, a reminder that the last meeting for this year will be on September 9th at 7 PM in the lower level of the Library. This is a business meeting, but we will also be discussing the Denmark Cemetery Collection. We would love to have you there to help.

Even though we do not hold monthly meetings during the winter, the collection is available for research by appointment. Monthly meetings will resume in April on the second Monday of each month. Daryl Kenison

New Document and Artifact Donations

The DHS is pleased to receive the following new materials into our collection. We know that family photos, documents, and heirlooms are valuable to your family history. Whenever possible we copy materials, but we are very appreciative of artifact donations that add to the interest of our collections. We thank the following people for their donations:

- ❑ Documents: History of Head's Corner – Alex and Gail MacGregor
- ❑ Artifacts: Assortment of old jars and bottles and a steel oxen nose clip – Pickett Hill Farm
- ❑ Book: Denmark Grammar School Annual – 1952 – Claudia Schmidt Sullivan (see story on page 7)
- ❑ Photo and documents: Deed and picture of the Thomes Farm – James and Muriel Carr.

July Open House a Success

Our July Open House was a great success and we pass along our appreciation to all who attended and helped to provide information, identify pictures, and help with unanswered questions.

Our new meeting and display room was a success and visitors enjoyed seeing and reading about the artifacts in the new display cases.

A particularly popular display was an enlarged picture of Denmark folks enjoying themselves at what is believed to have been a Corn Husking Bee c. 1908.



The names listed on the back are as follows: 1st. Row, Basil Boyd – Miles Boyd – Jennie True – Annie Potter – Gertrude Jope – Mildred Jordan – Chauncey Wentworth – Ray Ingalls – John Berry – Boyd Boy – Verne Dresser – Rufus Potter – Beryl Bean – Ruth Potter – (?). 2nd Row, Gustil Jordan – Granny Perkins – Julie ? – Friends of Perkins (?) – Mau-baby & wife – Vilta Boyd – Ida Webb – Doris Jack – (?) – Belle Wentworth – Willie Dresser – Liz Ann Richardson – Laura Higgins – Flossie Wentworth. 3rd Row, Annie Welch – Ozz Richardson – (?) – Mr. Gerry – Burleigh Smith – Scott Wentworth – (?) – (?) – Chauncey Bean – Rich True – Charles Smith – Joe Wentworth – Bill Holland. 4th Row, Jeluice (?) True – Irving Trumbull – Bill Potter – Jesta Joyce – Sara Perkins – Chauncey wentworth – Mrs. Wentworth – Marsh Wentworth – Minnie Alexander – Chin Webb – Annie Wentworth. If any of these names are familiar to you we have a much sharper picture in our collection. And, if you have more information about the photo please send us a note.

Also, we thank those who filled out a *Denmark History Form: 1976 to the Present*. You never know where missing or new information may come from. It is how connections are made and our understanding of Denmark History grows.

APPLES IN MAINE:

Denmark and Brownfield

JoAnne Robbins Harbourt

Long before the pilgrims landed on Plymouth Rock sailors and fishermen were the early *Johnny Appleseeders* of Maine. Over 400 years ago European sailors were already fishing the Gulf of Maine. Part of their stored food supply included barrels of apples – apples were already widely planted in Europe. The sailors threw their apple cores overboard and some even planted seeds on the Maine islands they anchored near and used. Early Maine settlers continued the trend, they brought seeds with them and wrote to England for other varieties. Apples are easily cross pollinated and do very well with Maine climate, water, and soil. The seeds also were spread by animals and birds. Those varieties not strong enough to survive the harsh Maine winters soon died out. It was not long before Maine farmers began to select for those apples they liked best and by the time of the American Civil War, Mainers had developed over 200 apple varieties found only in Maine. These varieties are now called Maine Heirloom Apples.

The early settlers did not have nearby grocery stores, and usually road access to little villages was limited and often impassable due to condition or weather. The food they needed had to be grown or raised on their own farm. Apples were a very important crop on everyone's farm. The apples could be stored in a root cellar and would provide fresh fruit for the family during the winter. They were fed to farm animals (cattle, sheep, hogs, and horses), and were used to make cider, jam, apple butter, desserts, molasses, and vinegar. Molasses took the place of sugar when it was not available or was too expensive to buy. Vinegar is a mild acid and was a very important apple product used in all aspects of farm life. It was used in cooking to pickle vegetables, tenderize meat, and to make dressings and desserts, It was a staple of early medicine supplies to treat burns, infections, and colds. It was a good germicide and an excellent cleaning fluid, and farmers used it to remove rust and kill weeds. Vinegar remains an important product and is still widely used as it was in colonial times.



c. 1916, Gorham Normal School (now USM). In the foreground; four apple trees, one still bears fruit, survive from the McLellan Farm, an earlier owner of the land. Trees are believed to date from the 1800s.

Almost every early settler in Denmark and Brownfield had a small orchard for their own use, but a few residents had larger orchards that were family businesses. In the later years some of the apples from these orchards were sent to nearby mills that made commercial cider or vinegar, but many were packed in wooden barrels and sent to England. By the late 18th century, most trees of all types in England had been cut down for firewood or building materials. The following families in Denmark had large commercial orchards: E.P. Ingllas, Ike Berry, Algie Jewitt, Charles Pingree, and Fred Sanborn. In Brownfield the Wentworth family had large orchards and growing apples to sell was a family business. If you know of other large commercial orchards in either town please let us know.



A Maine Commercial Apple Orchard, Location Unknown

The Maine Heritage Apple Orchard in Unity is comprised entirely of apple varieties that originated in Maine. The Orchard is maintained by *The Maine Organic Farmers and Gardeners' Association* (MOFGA). MOFGA's goal is to track down as many Maine Heirloom apple varieties as possible, and plant them in the Heritage Apple Orchard. Most apple trees produce fruit for nearly 100 years, so if you come upon an apple tree in the woods or in a vacant field give MOFGA a call. The tree just might be a rare Maine variety that once was part of a farm that has long since been abandoned to Mother Nature. The farm may be gone but the apple tree keeps on growing and producing apples. Become an apple explorer!



Ahh, History in a Bottle

As a kid, we were all probably intrigued by the idea of “The Message in a Bottle,” and certainly popular culture is full of movies, songs, and poems extolling the excitement of finding a message in a bottle. But try to consider the excitement of an empty bottle; what was in it, who used it, where did it come from? The four bottles pictured here were found in the rubble pile on the Old Smith Farm, and donated to the DHS by Brian Grennan and Fritz von Ulmer, owners of what is now the Pickett Hill Farm (See June 2013 DHS Newsletter). The bottles have virtually no cash value, but oh the stories they tell! And, thanks to historical collections and the *Internet* we have access to those stories.



Consider bottles #s 1 and 3. The cobalt blue glass and the shape of jar #3 might lead you to guess *Vicks*, and you would be right, but there is so much more to the story. *The Vicks Chemical Company* was founded in 1890 by American chemist, Lunsford Richardson. In 1891, the company produced and sold *Croup and Pneumonia Salve*. In 1905 it was renamed *Vick's Magic Croup Salve*, and in 1912, it became the more familiar *Vick's Vapo Rub*. The 1918 flu epidemic increased the sales of Vick's Vapo Rub from \$900,000 to \$2.9 M in just one year. In 1931, the company introduced VICK'S VA-TRO-NO (bottle #1), a medicine that acts much like Sudafed or Claritin does today. The *Vick's Chemical Company* was sold to Proctor and Gamble in 1985.

The average person spends seven days a year in bed
Don't let the 6 danger spots in your own home make you ill

Sylpho-Nathol
Keeps disease away

Most ailments spread by germs which come from diseased persons, animals, or objects which have been in contact with them. These are your danger spots in the house. They are the places where germs are most likely to be found. They are the places where germs are most likely to be found. They are the places where germs are most likely to be found.

In 1877, American chemist, Samuel Cabot, founded a company and promptly set to work doing what he liked best to do—playing with chemistry. Shortly after the company was founded Samuel pioneered techniques that improved materials that better protected wood products. Cabot invented the original wood preserving shingle stain that created a new product line that continues to prosper today—*Cabot's Stains*. About this same time, 1870s, Infantile Paralysis (Polio) was breaking out of Europe and epidemics also became regular events in the U.S., particularly in cities during the summer months. In 1884, ever the inveterate chemist, Cabot introduced *Cabot's Sylpho-Nathol*, sold in bottle #2. Sylpho-Nathol was a coal-based disinfectant marketed to clean the six danger spots in the home thought to harbor germs and cause polio.

First aid in every household
Musterole

Cough, cough, cough. How it racks little Dorothy and passes on to mother and grandma and holds a croup danger for all the little ones!

Hurry, there, with the **Musterole**, that pure, white ointment that is better than a mustard plaster—and it will not bring a blister. Massage it gently over the chest and neck. Feel the tingle, then the cool delightfulness as **Musterole** searches down. It will penetrate, never fear. It will rout that old congestion clear away.

Musterole is a pure, white ointment made from oil of mustard and a few home simples! **Musterole** searches in under the skin down to the heart of the congestion. There it generates a peculiar congestion-dispersing heat. Yet this heat will not blister. On the contrary you feel a relieving sense of delightful coolness. Rub **Musterole** over the spot. And you get relief while you use it; for **Musterole** results usually follow immediately.

On no account fail to have a jar of **Musterole** handy. For coughs and colds and even the congestions of rheumatism or lumbago **Musterole** is wonderful. Many doctors and nurses recommend **Musterole**.

30c and 60c jars—\$2.50 hospital size. The **Musterole Co.**, Cleveland, Ohio
BETTER THAN A MUSTARD PLASTER

MUSTEROLE
WILL NOT BLISTER

Come out of that stuffy HEAD COLD FOG

Breathe Again!

Don't go on suffering all the miseries of a head-cold! Open up your nose—in seconds—with soothing **Vicks Va-tro-nol** Nose Drops. Reduces swelling, makes breathing easier. A few drops up each nostril as directed gives wonderful relief.

VICKS VA-TRO-NOL
NOSE DROPS

NOW—for children...
a new, different aqueous nose drop that clings to give longer relief. Milder-feeling. Fully effective.

New Mild Vicks Va-tro-nol Nose Drops For Children

The *Musterole Company* of Cleveland, Ohio introduced *Musterole* in the 1940s and sold it in jar #4. The jar pictured sold for 30 cents. *Musterole* was marketed as a better solution to the homemade mustard plaster, a home remedy made of a poultice of mustard seed powder, and applied to the skin. It usually caused eye irritation, coughing, sneezing, vomiting, and often blistered the skin. A definite case of the cure being worse than the disease.



So, the next time you come across an old empty bottle, stop and think. It may hold a lot more than you think it does.

Calendar of Events

- Monday, September 9th, 2013 – DHS Business Meeting – 7:00 PM (Library Lower Level)
- Monday, April 14th, 2014 – DHS Business Meeting – 7:00 PM (Library Lower Level)

Although we will not hold regular meetings during the winter, our collection is available for research by appointment. You may call the library (452-2200) and they will relay your request, or email your request to us at denmarkhistoricalsociety@gmail.com.

Birch Cove Fund Grant

The Denmark Historical Society recently received a grant in the amount of \$2,000 from the Birch Cove Fund. We were notified by the Maine Community Foundation that someone, who wishes to remain anonymous, recommend the DHS for this grant.

We are thrilled to accept this grant and it comes at a time when we feel ready to use it to move forward on several projects that are important to us. During the past few years we have worked diligently to secure our collections, and to make them available for research.

Our first project will be to address our Denmark Cemeteries collection. We have 1973 data that is beginning to fade. We will update, diagrams, photos, and information and make it available in softcopy. Our second project is similar to the first, but involves updating the history of Denmark historical homes and businesses. During this next year we will be holding workshops to move both projects along. If you would like to help please send us an email.

We do not know who recommended the Historical Society for this grant from the Birch Cove Fund, but we are very grateful. We are as appreciative of their faith in us as we are in receiving the grant funds. The Denmark Historical Society Board

Perley's Mills Notes

Denmark had two intersecting points with the Bridgton and Saco River Narrow Gauge Railroad (B&S). One station was located on Ingall's Road and the other at Perley's Mills, the site of a large lumber, shook, staves and shingles mill once called Clifford's, and later owned by John F. Perley and Wallace W. Berry. Perhaps because of the mill, the larger Perley's Mills station handled a greater outflow of traffic and passengers, than did the Ingall's Road Station. The following notes are from the diary of Wallace W. Berry—who served as the station agent.

- **1883**
 - Feb 8 – Train fare to Bridgton \$1.30
 - Apr 12 – Engine off track, left for night
- **1884**
 - Feb 8 – Another series of storms kept the trains at Hiram for 24-36 hours
- **1885**
 - Oct 10 – The station agent's wages for the month, \$15.00
- **1886**
 - Sep 3 – A wreck on the P&O line at East Baldwin killed the engineer and firemen. This caused a delay of the B&S
- **1894**
 - Feb 15 – It was necessary to use three engines to clear track after snow storm
- **1895**
 - Apr 16 – "Biggest Storm in years." No regular trains, passengers rode in box cars
- **1896**
 - Mar – Heavy rains, 600 feet of the railroad was washed out on the meadow
- **1901**
 - June – The agent's wages were \$20.25
- **1910**
 - July – "Made report, sent all things to Bridgton. Done for good, attending station."

In 1910, the B&S Narrow Gauge Railroad was transferred to a new owner and continued in operation into the 1930s.

Narrow Gauge Railroad Delivers Wedding Couple

1990 Bridgton News Article



I Remember It Well Days Riding The Narrow Gauge Railroad

Ed. NOTE — Our readers are providing recollections of days gone by in this continuing column. Anyone with a fond or interesting memory is invited to submit a column...

by Alvina Kenison

The day Jesse and I were married, Irving Trumbull took us to the Ingalls Road Station, as we used to call it. Perhaps it was called Perley Mills Station. Anyway, it was on the old narrow gauge line. Irving had a very pretty white horse and wagon. On April 20, 1920 it was very muddy. Automobiles were not used much.

We came up to Bridgton on the train and walked down to my sister Mattie Johnson's house. She lived in a white three-tenement house on Lower Main Street where the Brown trailer is now. We had dinner with her and then she walked with us up to Rev. Harry McKenney's house on North High Street, where Jesse and I were married.

We went back to my sister's until it was time for the narrow gauge to leave for Bridgton Junction to meet the Maine Central train. We hadn't gone but a little way on the narrow gauge when they had to apply the brakes going around a curve. Every time the brakes were applied, the cars would rock back and forth. There were not any electric lights at that time, but they had kerosene lanterns on the sides of the

cars. We happened to sit one seat in back of a lamp, and were glad of it. When they put the brakes on it shook the car so a lamp chimney tumbled off and fell into the empty seat in front of us. The conductor hurried up and replaced the chimney, then went to replace another one that had fallen off.

We finally got to Bridgton Junction in time to meet the Maine Central train, and we went to Portland for the weekend.

On Monday morning we came back to Brownfield on the Maine Central train and rode to Denmark with the mail carrier. He had two horses and a two-seated wagon to carry the mail and any passengers who needed a ride.

We lived with my mother, as she was not able to live alone. That evening, we were sitting in the living room when we heard sleigh bells, cow bells and drumming on tin pans. We could see a large crowd over by the bridge, walking toward our house. When they got under the streetlights, we recognized many old friends and young ones coming to serenade us, as they used to do in those days. What a happy evening we had with them, and the memories are still precious to me.

We never had another chance to ride the narrow gauge. But I wish we had that little train now — I certainly would take another ride!

Denmark Through The Years

About 200 Years Ago

Joseph Bennett, Esq. came to Denmark from Sanford, Maine in 1825. He became a well-known citizen of Denmark. During his lifetime he was a business merchant, served as postmaster for seventeen years, was involved in local history, and held various offices, including Justice of the Peace and treasurer from 1874-1877. He died on January 21, 1901 at the age of 81. A 1907 copy of *The Town Register: Brownfield, Denmark, Hiram, and Porter* uses notes about the early settlers of Denmark from a notebook by Joseph Bennett. Apparently, Mr. Bennett took great interest in local history, but any materials he created on the subject have been lost. *The Town Register* was printed in 1907 by a company in Brunswick, Maine. The DHS is hopeful that the Maine State Museum will be able to help us locate his materials.

About 50 Years Ago

1963 was a busy year for road issues in Denmark as the number of road related articles in the Annual Report indicates. Of the 44 articles on the Town's agenda that year, nine of them were about our roads: "To see what sum the town will pay..."

- #8 - ...roads and bridges – recommends \$4,750.
- #9 - ...purchase and installation of culverts—recommends \$1,500.
- #10 -- ...payment of snow bills—recommends \$6,500 (\$500 of same for snow fence).
- #12 -- ...to treat town roads—recommends \$500.
- #13 -- ...bush control on highways—recommends \$300.
- #14 -- ...maintenance of existing tarred ways—recommends \$750.
- #15 -- ...to tar Town Road Improved roads—recommends \$1,500.
- #16 -- ...State Aid road reconstruction—recommends \$1,066.
- #27 -- ...for street lights—recommends \$410.

About 150 Years Ago

143 Denmark men answered President Lincoln's call to serve in the Union Army. Eight men died in battle (Henry Fifield, Wallace Frost, Arthur T. Jordan, Charles Jordan, Andrew Kenison, William Kenison, Levi P. Meserve, and Henry Wentworth), three died in Southern prisons (Josephus Colby, Asa McKusick, and Ephraim McKusick), seventeen died in service, and 115 men were lucky enough to return to Denmark and continue with their disrupted lives. While surviving, many returned with wounds, injuries, and illnesses that likely shortened their lives.

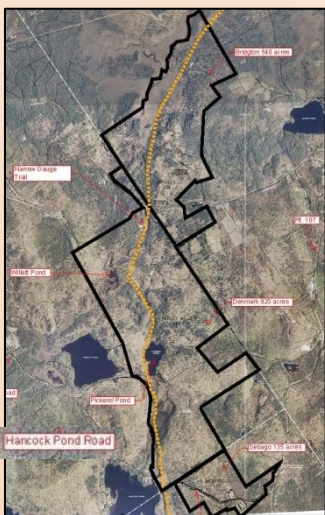
About 100 Years Ago

At the 1813 Annual Meeting, 45 years after the end of the civil war, Denmark residents voted to spend \$150 for a large bronze tablet bearing the names of Denmark soldiers who served during the Civil War. Location and placement of the tablet was to be determined.

Today, the names are part of the Memorial in front of the Municipal Building that commemorates all Denmark veterans who served their country during times of war—Revolutionary War, War of 1812, The Aroostock War, Civil War, Spanish-American War, WW I, WW II, The Korean War and the Viet Nam War.



2013: History Under Development - The Perley Mills Community Forest



Loon Echo Land Trust is collaborating with the towns of Denmark, Bridgton and Sebago to protect the 1600 acre Perley Mills property in order to create a community forest. The majority of the land will be owned and managed by the Town of Denmark, pending voter approval, with a conservation easement held by Loon Echo.

The property contains three miles of the Narrow Gauge Trail, a state ITS 89 snowmobile and regional ATV network, as well as Pickerel Pond and Willett Pond. With many important historical, ecological, recreational and economic features, protecting this parcel as public open space and managed forestland is an asset to the surrounding communities.

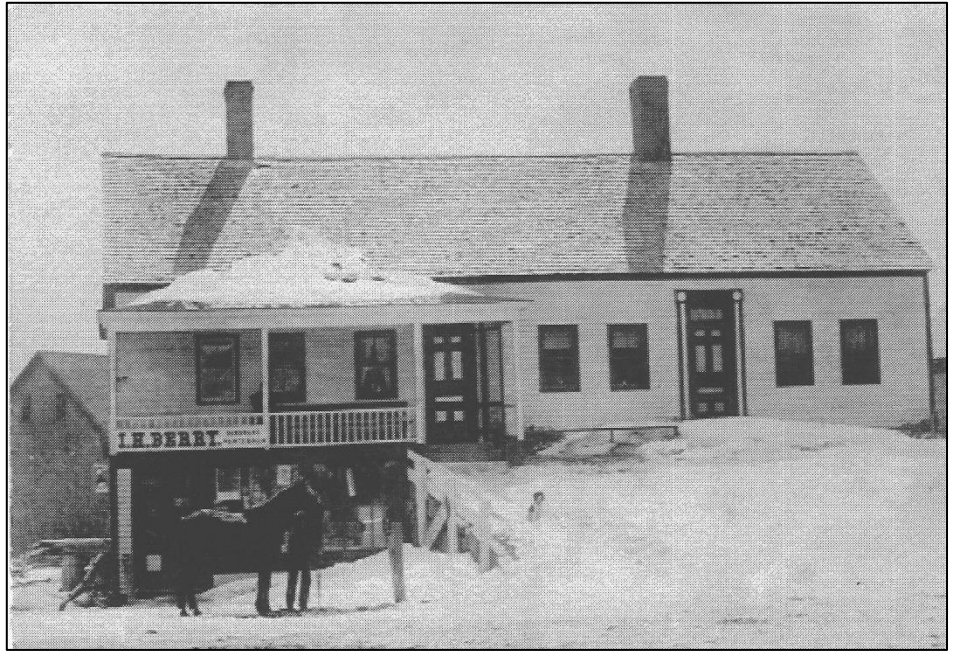
The Perley Mills Community Forest will preserve all the areas discussed in the stories *Perley's Mills Notes* and *Narrow Gauge Railroad Delivers Wedding Couple*, on page 4. We hope you will consider a donation to help make this Community Forest a reality and part of Denmark's History Under Development. Go to loonecholandtrust.org for details.

Business in Denmark: Then and Now

Business on West Main Street



Still standing today, now as the Moose Pond Brook Apartments, this c.1900 view is of the building when it housed the I.H. Berry Hardware Store. It is located just across the road from the Moose Pond Dam, along Moose Pond Brook. Berry's Hardware carried agricultural implements, paints, oils, farm tools and instruments, among numerous odds and ends required by Denmark citizens.



In 1897, Isaac H. Berry, owner of this I.H. Berry Hardware store, also was Chairmen of the Board of Selectmen. The two other selectmen were A.D. Fessenden and A. P. Pingree. Berry had already served terms on the Board of Selectmen and would go on to serve again. Isaac H. Berry was born in Denmark on January 12, 1857. He grew up on Berry Hill and attended local schools. On October 15, 1874, he married Mary A. Lord from Fryeburg. They had two children: Emily Fuller, born October 25, 1875 who married Leon H. Ingalls; and Mary A., born August 16, 1879 who married Irving K. Ingalls. Isaac H. Berry died on March 17, 1910.

As it was with most men of his time, Isaac was a business man, a farmer in the summer, and a logger in the winter. He was considered a very proficient farmer of his many acres and he owned a large apple orchard. In addition to meeting the basic garden product needs of his family, Isaac farmed hay, corn and potatoes for market. He was very active in political matters and was a member of the *Republican Town committee*, often serving as its chairman. He belonged to the *Mount Moriah Lodge*, the *Independent Order of Odd Fellows*, and to the *Hiram Lodge Knights of Pythias*.

An 1897 publication of *Biographical Reviews of Leading Citizens of Franklin & Oxford, Counties, Maine*, had this to say about Isaac H. Berry, "An able and progressive business man and one who takes an earnest interest in the general welfare, he is highly regarded in the community." Isaac H. Berry was the youngest of eight children. His older brother, William W. Berry, is featured in the *Perley's Mills Notes* article on page 4.



Taken: 2013



Additions/Corrections to DHS Newsletters

We are so appreciative of the support our members provide to us in responding to our newsletter articles. We try to thoroughly research each article and provide the most accurate information possible. However, history can be an evasive thing and many of you know a lot more about Denmark History than does your editor. Our plea is this; don't stop! Communication is a learning tool. Thank you to those who provided the following input about our June 2013 DHS Newsletter.



Allene, Westleigh, Denmark Postmistress, Retired, reports that the metal stencil "Denmark, ME Post Office" found in the home of Brad York's parents in Brownfield may have been used to stencil the wooden crates that were used to separate mail. When the rail line between Portland and Brownfield operated, mail for surrounding towns was delivered from Portland to the railroad station at Brownfield, where it was separated. Brad York's father, Robert York, was the rural or star route carrier—everyone called him Red. Julia Wells was Postmaster of East Denmark at that time.

LeeAnn Shand, daughter of Edmund Pingree, provides the following information on "An Island in Denmark," an article reporting the repositioning of Route 117 at Head's Corner. "The corner was historically very sharp and dangerous. People drove fast on the road." Mr. Pingree was a selectman in 1961 when the town voted the money for their portion of the new road. The year before, Charlie and Bernice Day's daughter and boyfriend were in an accident and she broke her leg. Harold Stone was the Road Commissioner and Percy Lord was part of the crew. The Stacy brother's Dad, Arthur Stacy, worked for the state road crew who helped with the road.

If anyone has pictures of the road construction and the men who worked on it please let us know, we will scan and return them. Thanks.

1953 Denmark Grammar School Annual

In 1953, the Denmark Grammar School decided to publish an annual for their school. The Editorial Board was diligent in seeking business sponsors to finance their endeavor. The dedication reads, *To our town, and townspeople who have helped to make this yearbook a reality instead of a dream, we gratefully dedicate our first Denmark Grammar School Annual.*



Editorial Board
Seated L to R:
Scott Mitchell,
Alice Barton, Jean
Stone, Frances
Bucknell.
Standing L to R:
Peter Smith,
Charles Weeman,
Dianne Hale, Paula
Schmidt, Mrs.
Smith, Lola Largey

"Our heartfelt thanks to Mrs. Eleanor Sanborn and Mr. Peter Schmidt for typing the material, and to Mr. Donald Johnson of the Portland Press Herald Staff for taking the photographs."

TOWNS

It isn't the size of a town that counts
Or the wealth of its industries;
It isn't the width of the village streets,
Its beauty of parks and trees;
It isn't the height of the buildings tall,
It isn't the bustle and din;
It isn't the station of brick and stone
You see when the train pulls in.

It isn't the size of a town that counts,
It's the POLKS who are living there;
Their friendliness and good fellowship
Will make any village fair.
A town is as big as the hearts within
That rule it and turn its wheels.
It isn't the size of a town that counts,
It's the breadth of a town's ideals.

Printed in the 1953 Denmark Grammar School Annual

New Historical Society Members

We welcome the following new members to the DHS and appreciate those of you have renewed your membership. Members and sponsors are the lifeblood of our Society. In addition to their invaluable support, they bring with them new interests, ideas, and a wealth of background information.

Sponsors (check them out on our sponsor pages)

- The Fryeburg Chronicles – June O'Donal
- The Pleasant Mountain Camping Area – Katie Dunn

Lifetime Members

- Tom Carabine of Andover, Massachusetts
- George Skogland of Denmark, Maine

Annual Member

Chris Brown, who is interested in historical plants and their uses



Local Businesses Who Support the Denmark Historical Society



Norway
Savings Bank
COLORFUL SOLUTIONS™

Ideal Get-A-Way
IN DENMARK, MAINE

Red Shed Cottage

(sleeps up to 4 adults)

\$45 per person per night

(207) 452-2239

www.picketthillfarm.com

WYONEGONIC CAMPS



Denmark, Maine
207-452-2051

www.wyonegonic.com

Pleasant Mountain Camping Area
On Moose Pond in Denmark, Maine



The Dunn Family

28 Dunn Drive
Denmark, Maine
04022

207-452-2170

Open May-October
Dog Friendly

Stacy's Service Center



Russell C. Stacy
MASTER OF ALL
"One Tools Kill Two"



From Small Engines to Cars, Trucks
and Light Excavation Work

452-2266

(call if you want but I won't answer)

Rt. 117 • 449 Bull Ring Rd • Denmark, ME 04022

Hours:
Maybe Tomorrow



ACE
Insurance Agency

COVERAGE FOR MAINE & NH

P.O. Box 100, 43 East Main Street, Denmark, ME 04022
Toll Free: 1-800-452-0745 • Phone: 207-452-2411 • Fax: 207-452-2040
web: www.aceinsurance.biz e-mail: aceinsurance@fairpoint.net

**HOME - AUTO - BUSINESS - CONTRACTORS
RENTERS - RV - MOTORCYCLE - ATV - BOAT**

Skylark



JAZZ ENSEMBLE

• Weddings • Private Parties • Special Events

Featuring Jazz Standards with Vocals

207-452-2665 • 207-452-2942

www.SkylarkJazzEnsemble.com



Rewinding Services

Douglas M. Bauer
President



Maine Craftsmanship

The Moir Co. Inc. Route 117 Denmark, ME 04022
Tel: (207) 452-2000 Fax: (207) 452-2900

Local Businesses Who Support the Denmark Historical Society



**Cardinal
Printing
Company Inc**
Jim Stacy Owner
 PO Box 115
 Denmark, ME 04022
 E-mail: cardinal@fairpoint.net
 Phone: 207-452-2931
 Toll Free: 1-800-320-2931
 Fax: 207-452-2979



Southern Maine Retirement Services

P.O. Box 283, 150 Main Street
 Bridgton, ME 04009

Local 207-647-2900
 Mark Cell 207-740-1804
 Sonya Cell 207-740-1060
 Email: mark@smaineretirement.com
 Email: sonya@smaineretirement.com

Mark W. Allen
Sonya A. Allen

We specialize in Medicare Supplements & Prescription Plans

The FRYEBURG CHRONICLES

More than a novel – it's an education

**Historical Fiction set in Fryeburg, Maine
 by author, June O'Donal**

Thefryeburgchronicles.com

Paul and Susan Cady

27 Kamp Lane
 Denmark, ME 04022

(207) 452-2342
office@grangerpond.com
www.grangerpond.com



Cabins to Castles, Inc.

Knowledge...Commitment...Integrity...at Your Service



"Naturally"



Denmark, ME 04022 www.cabinstocastlesinc.com Tel: 207-452-2997

MACDONALD MOTORS

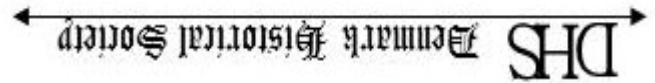
macdonaldmotors.com



R. H. LEGOFF EXCAVATION CO.

253 HIG RIDGE RD. PH. 207-452-2540
 DENMARK, ME 04022

Denmark, ME 04022
P.O. Box 803



Please remember our troops

We hope you will join us in working to keep the Denmark Historical Society Active

You may go to the DHS Website at www.denmarkhistoricalsociety.org to download a full membership form and let us know what your historical interests are.

\$10 individual, \$40 Business Sponsor, \$100 Lifetime Member

Please include this information with your application or dues payment.

Name: _____

Address: _____

Town: _____

State: _____ Zip: _____

Telephone: _____

Email: _____